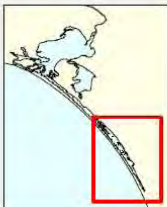
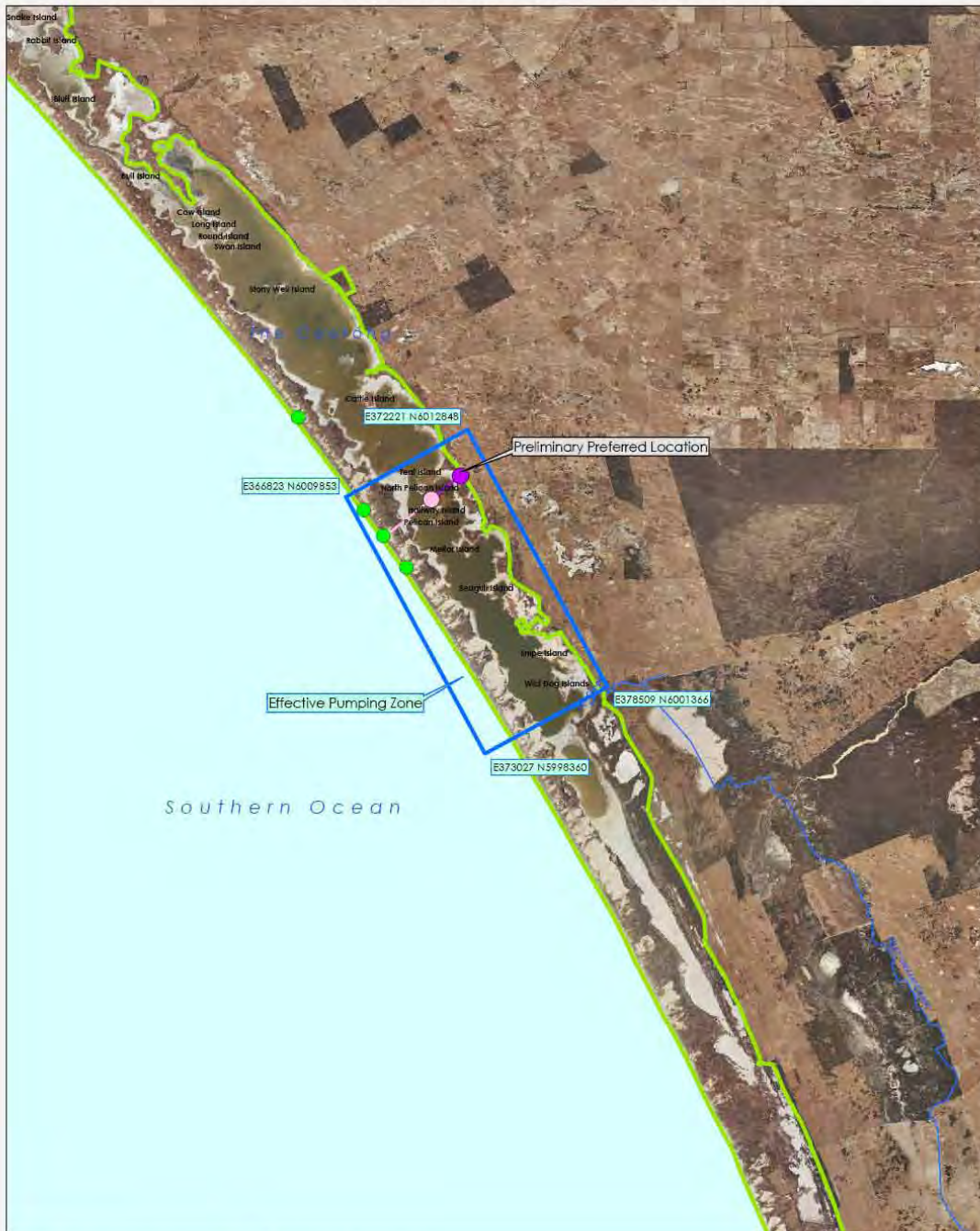


South Lagoon, Coorong Proposed works area for Pumping Lagoon



- ▭ Proposed Works Area
- ▭ RAMSAR Reserve
- Proposed Cable Route
- Proposed Pipe Route
- Water Course
- Proposed Generator Location
- Proposed Barge Location
- Vegetation Transect Sites



Produced by Coorong, Lower Lakes and Murray Mouth Projects
 Department for Environment and Heritage (DEH)
 GPO Box 1047, Adelaide SA 5001
www.environment.sa.gov.au/clm
 Data source
 DEH - Topographic data &
 aerial imagery (South East 0.9m 2008)
 27 May 2010
 Compiled
 Projection Transverse Mercator
 Datum Geocentric Datum of Australia, 1994
 Map Grid of Australia, Zone 54

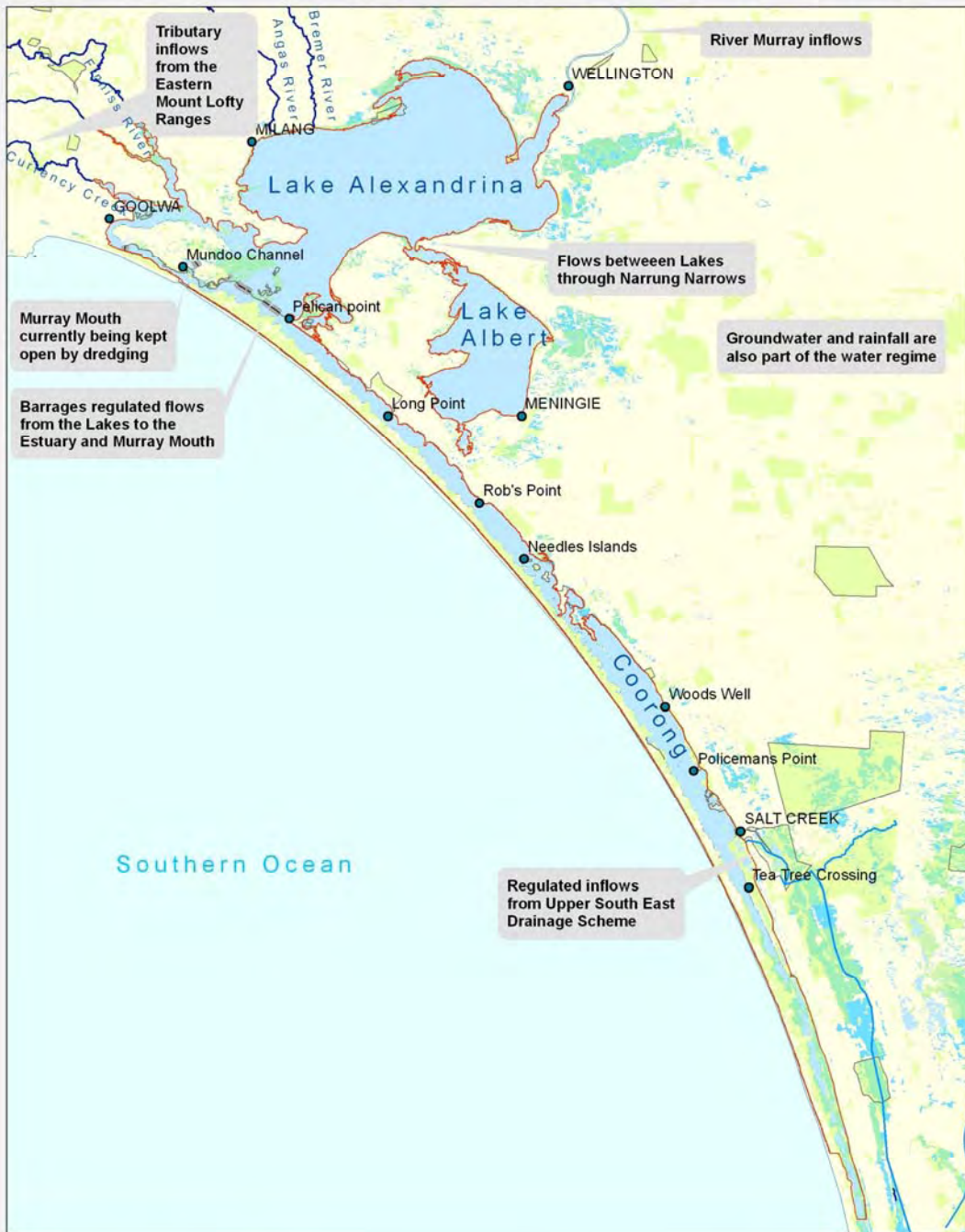
© Copyright Department for Environment and Heritage 2010.
 All rights reserved. All names and information contained here are subject to copyright. For
 reproduction or communication in any form or by any means, written permission must be sought from the Department.
 All other marks within this map have been made to assist the accuracy of the information displayed.
 The Department, its officers, officers and employees, contractors, subcontractors, service providers,
 suppliers and other persons are not liable for any loss or damage, whether direct or indirect, arising
 from the use of this map or any other information contained herein.

Government of South Australia
 Department for Environment and Heritage

DEH MapID: 2010-3445

APPENDIX A, FIGURE A

Coorong and Lakes Ramsar site: Overview of primary water sources and flow pathways



- Legend**
- Ramsar boundary
 - NPWSA reserves
 - Native vegetation
 - Water bodies
 - Land Subject to inundation
 - Tributaries
 - Barrages
 - Artificial drains SE



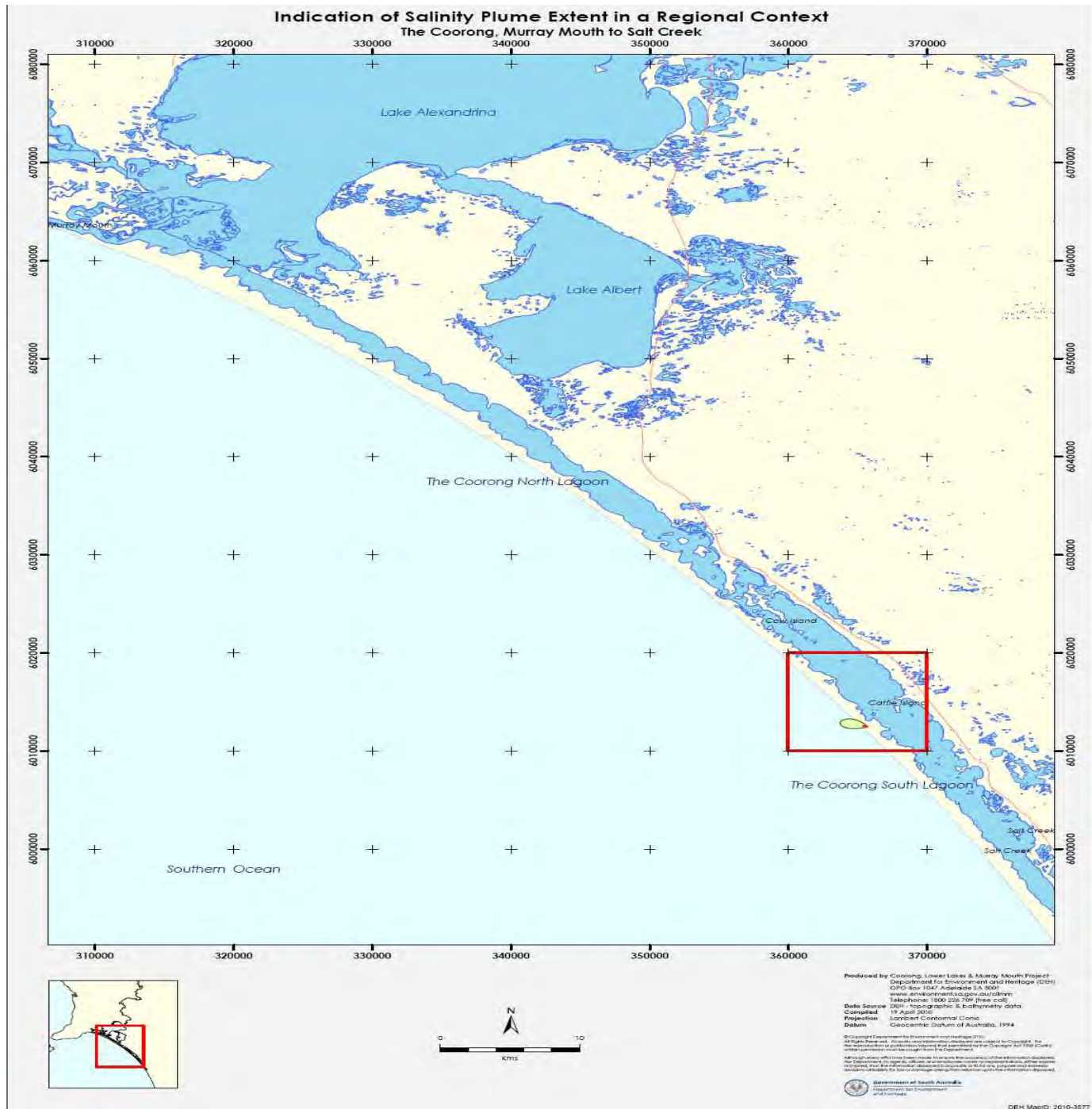
Produced by Information Science & Technology
 Department for Environment and Heritage
 GPO Box 1047, Adelaide 5001
www.environment.sa.gov.au
 Data Source: DEH OCE spatial layers
 Compiled: 31 March 2009
 Projection: Lambert Conformal Conic
 Datum: Geocentric Datum of Australia, 1994

© Copyright Department for Environment and Heritage 2009.
 All Rights Reserved. All works and information contained are subject to Copyright. For
 the reproduction or publication thereof and permission for the Copyright Act 1968 (Cth) a
 written permission must be sought from the Department.
 Although every effort has been made to ensure the accuracy of the information displayed,
 the Department, its agents, officers and employees make no representations, either express
 or implied, that the information displayed is accurate or fit for any purpose and accepts
 no liability for loss or damage arising from reliance upon the information displayed.



DEH MapID: 2009-1286

APPENDIX A, FIGURE B



APPENDIX A, FIGURE C

South Lagoon, Coorong Proposed Works Area for Pumping Lagoon



- Ramsar Reserve
- Water Body
- Main Road
- Water Course
- Township



Produced by Coorong, Lower Lakes and Murray Mouth Project
 Department for Environment and Heritage (DEH)
 GPO Box 8247 Adelaide SA 5001
www.environment.sa.gov.au/coorong
 Telephone: 1800 225 709 (free call)
 DEH: topographic & vegetation data
 31 May 2010
 Lambert Conformal Conic
 Observed at Sydney, Australia, 1994

© Copyright Commonwealth for Environment and Heritage, 2010.
 All rights reserved. All other content copyright reserved to Coorong, 2010.
 Reproduction in publication form without prior permission of the Copyright Clearance Center is prohibited.

Although every effort has been made to ensure the accuracy of the information contained in this report, the Department of Environment and Heritage does not accept any liability for any errors or omissions, or for any consequences arising from the use of the information. Reproduction in any form or by any means without the prior written permission of the Department of Environment and Heritage is prohibited.

Government of South Australia
 Department for Environment and Heritage

DEH MapID: 2010-3732

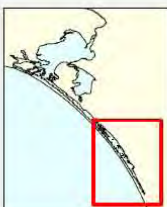
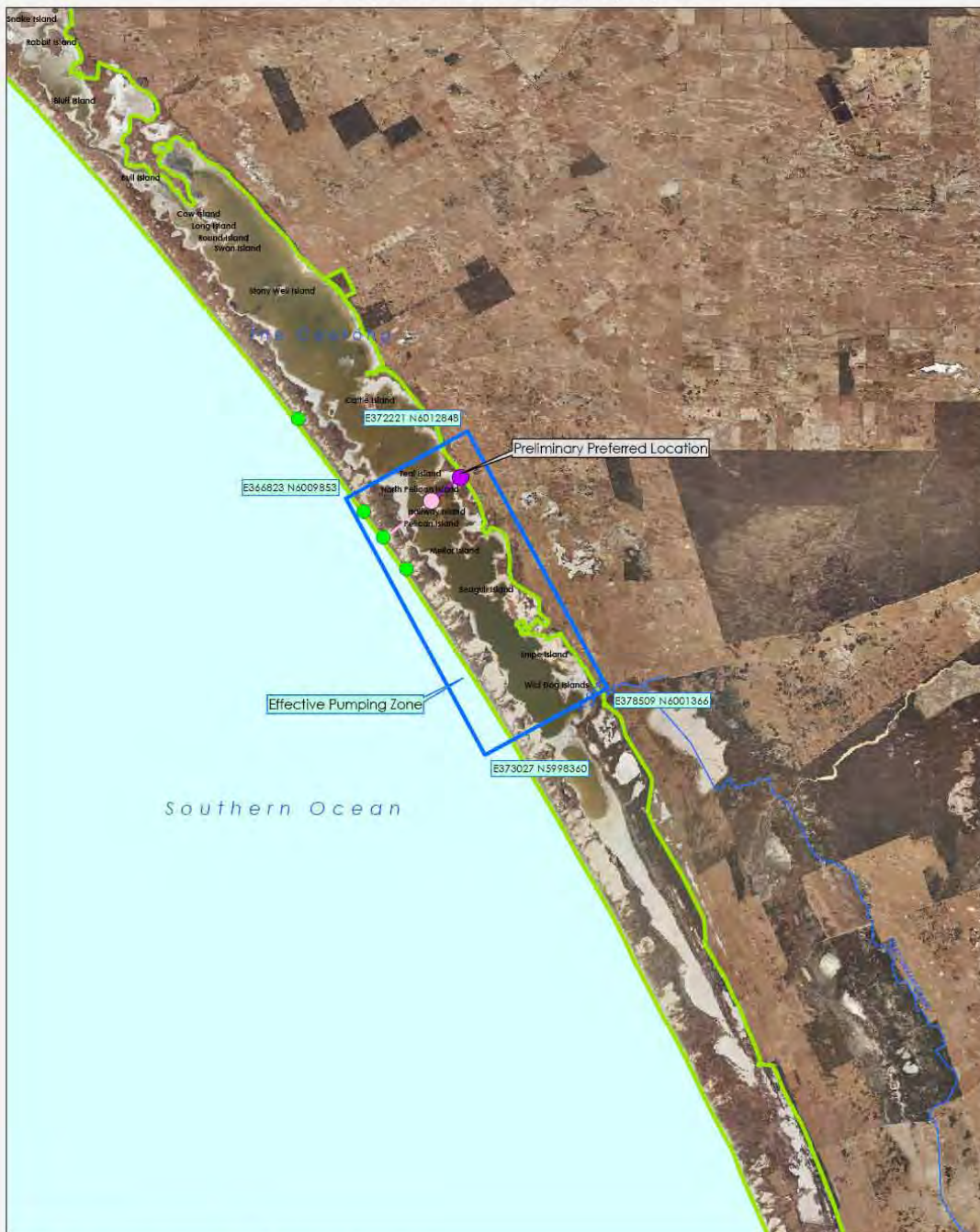
APPENDIX A, FIGURE D



APPENDIX A, FIGURE E Coorong South Lagoon

Photo D. Mariuz

South Lagoon, Coorong Proposed works area for Pumping Lagoon



- ▭ Proposed Works Area
- ▭ RAMSAR Reserve
- Proposed Cable Route
- Proposed Pipe Route
- Water Course
- Proposed Generator Location
- Proposed Barge Location
- Vegetation Transect Sites



Produced by Coorong, Lower Lakes and Murray Mouth Projects
 Department for Environment and Heritage (DEH)
 GPO Box 1047, Adelaide SA 5001
www.environment.sa.gov.au/clm/m
 Data source
 DEH - Topographic data &
 aerial imagery (South East 0.9m 2008)
 27 May 2010
 Compiled
 Projection Transverse Mercator
 Datum Geocentric Datum of Australia, 1994
 Map Grid of Australia, Zone 54

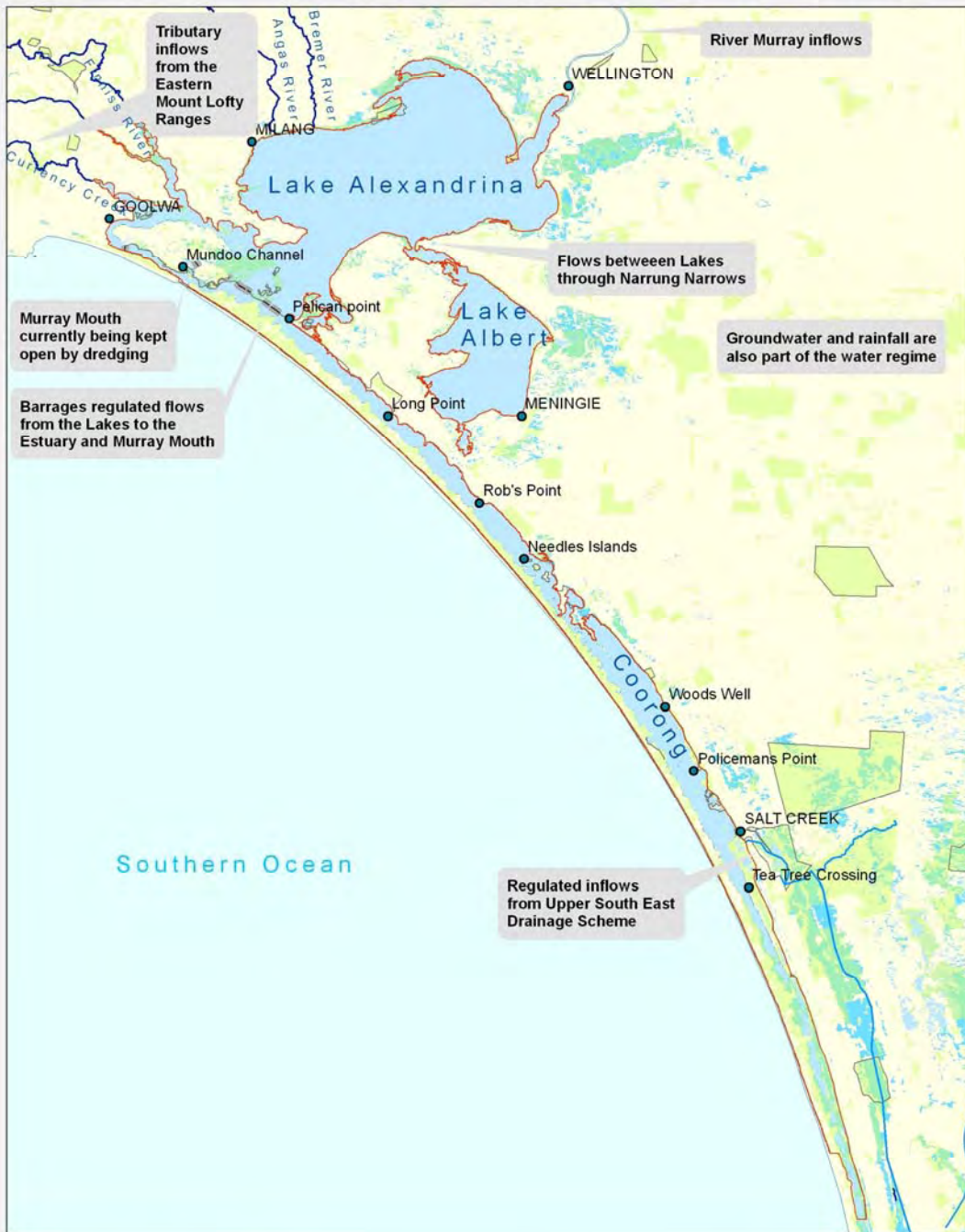
© Copyright Government of South Australia 2010.
 All rights reserved. All names and information contained here are subject to copyright. For
 reproduction or communication in any form or by any means, written permission must be sought from the Department.
 All other marks within this map have been made to assist the accuracy of the information displayed.
 The Department, its officers, advisors and contractors make no representation, warranty or
 liability for the accuracy of the information displayed. The Department is not liable for any
 damage or liability for loss or damage arising from the use of the information displayed.

Government of South Australia
 Department for Environment and Heritage

DEH MapID: 2010-3445

APPENDIX A, FIGURE A

Coorong and Lakes Ramsar site: Overview of primary water sources and flow pathways



- Legend**
- Ramsar boundary
 - NPWSA reserves
 - Native vegetation
 - Water bodies
 - Land Subject to inundation
 - Tributaries
 - Barrages
 - Artificial drains SE



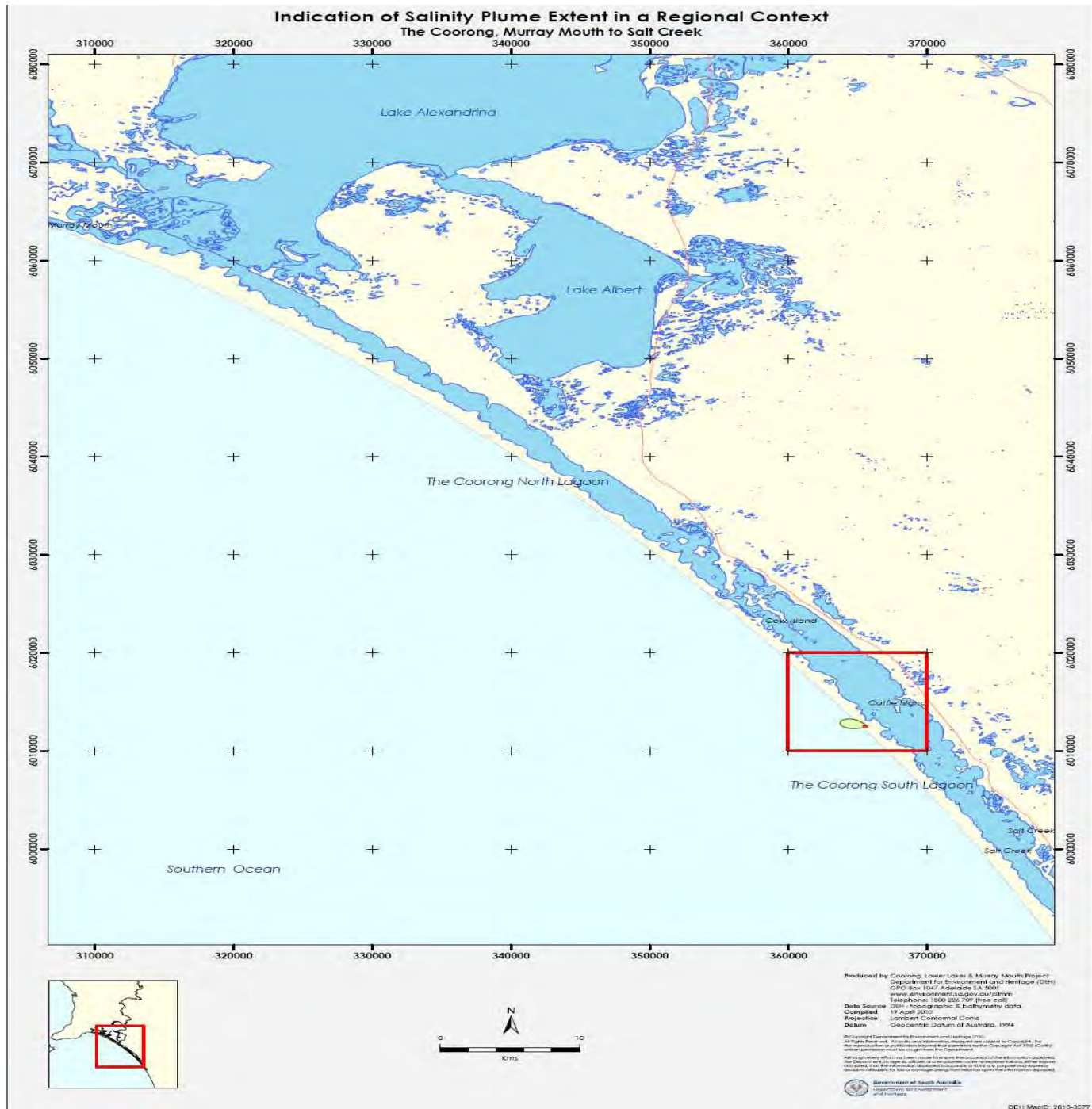
Produced by Information Science & Technology
 Department for Environment and Heritage
 GPO Box 1047, Adelaide 5001
www.environment.sa.gov.au
 Data Source: DEH OCE spatial layers
 Compiled: 31 March 2009
 Projection: Lambert Conformal Conic
 Datum: Geocentric Datum of Australia, 1994

© Copyright Department for Environment and Heritage 2009.
 All Rights Reserved. All works and information contained are subject to Copyright. For
 the reproduction or publication thereof and permission for the Copyright Act 1968 (Cth)
 written permission must be sought from the Department.
 Although every effort has been made to ensure the accuracy of the information displayed,
 the Department, its agents, officers and employees make no representations, either express
 or implied, that the information displayed is accurate or fit for any purpose and accepts
 no liability for loss or damage arising from reliance upon the information displayed.



DEH MapID: 2009-1286

APPENDIX A, FIGURE B



APPENDIX A, FIGURE C

South Lagoon, Coorong Proposed Works Area for Pumping Lagoon



- Ramsar Reserve
- Water Body
- Main Road
- Water Course
- Township



Produced by Coorong, Lower Lakes and Murray Mouth Project
 Department for Environment and Heritage (DEH)
 GPO Box 8247 Adelaide SA 5001
www.environment.sa.gov.au/coorong
 Telephone: 1800 225 709 (free call)
 DEH Topographic & Vegetation data
 31 May 2010
 Lambert Conformal Conic
 Observed at Sydney, Australia, 1994

© Copyright Commonwealth for Environment and Heritage, 2010.
 All Rights Reserved. All other content copyright Department for Environment and Heritage, 2010.
 Reproduction in publication form without prior permission of the Copyright Clearance Center is prohibited.
 Although every effort has been made to ensure the accuracy of the information contained in this document, the Department is not liable for any errors or omissions, or for any consequences arising from the use of the information. Reproduction in any form or by any means without the prior written permission of the Department is prohibited.

Government of South Australia
 Department for Environment and Heritage

DEH MapID: 2010-3732

APPENDIX A, FIGURE D



APPENDIX A, FIGURE E Coorong South Lagoon

Photo D. Mariuz